

Sales Person (Bob)  
8.11km N of Gosford, NSW.

Heading: 

Last Contact: 12th Mar 2009 16:58:26

Speed: 104km/h

[Get Address](#)

Fleet

19
20
21
22
23
24
25
26
27
28
29
30

# SAFETCELL

## BlackBerry Locator

An essential tool for all businesses to increase safety levels for field staff, enhance productivity, efficiency and client satisfaction, whilst reducing operational expenses.

**EZY2C**

ONLINE GPS MONITORING

# SAFETCELL IN THE WORKPLACE



## Business Manager

- Ability to monitor employee's safety and whereabouts with the click of a mouse
- Locate lost/stolen devices quickly and easily
- Assist with job allocation
- Improve your staffs' personal security
- Capacity to set standard working hours in which the web portal will report

## Field Sales Person

- Generate reports on the number and location of sales calls in your selected time frame
- Calculate most effective route planning to minimise down time and fuel costs as well as maximise time in front of clients



## Field Consultant

- Calculate exact time on client site for billing purposes and proof of work
- Eliminate the need for log books for personal taxation purposes

## Field Workers

- Clock on/clock off – verify standard hours and overtime worked
- Eliminate the need for time sheets



## Delivery Person

- Proof of delivery via image capture of signature and Geo tagged/time stamped
- Route planning
- Re-deploy field staff based on their whereabouts
- Monitor speeding

## Machine Operator

- SOS Function – reports man down SMS/Email alert with time and location



# ABOUT SAFETCELL

## What is SAFETCELL?

SAFETCELL is a live GPS monitoring solution for GPS enabled mobile phones. Once SAFETCELL is installed onto the mobile phone, it's whereabouts can be monitored using secure password access to the SAFETCELL web portal. Multiple reports can be generated and alerts received based on a number of parameters.

## Why SAFETCELL is a must have for all businesses?

SAFETCELL helps you ensure your remote staff are safe and sound, thereby complying with OH&S and Duty of Care legislation.

In tough economic times, it is critical to know where your staff are and where they have been, therefore; reducing costs, increasing productivity, efficiencies and customer service levels.

SAFETCELL is a low cost solution with a very quick Return on Investment (ROI).

The SAFETCELL application is effective, easy to install and easy to operate.

## Benefits in using SAFETCELL:

- Increased staff safety
- Instant location of man down – Email/SMS reporting with time and location
- Increased personnel security
- Improve productivity and operational efficiencies
- Route planning, accurate billing and resource management.
- Increased customer service levels
- Quicker response time by utilising closest field resource
- Reduced costs in wages, overtime and communications
- Monitor travel time
- View unauthorised mileage
- Reduced fuel and running costs of company vehicles

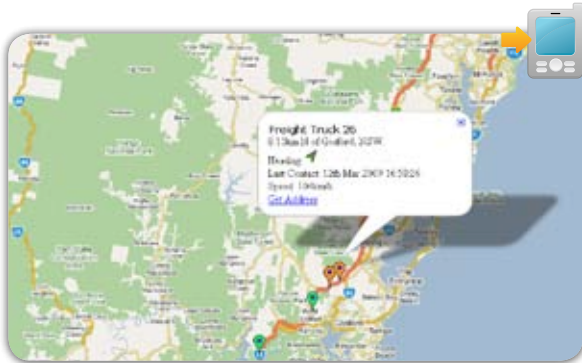


## Who are SAFETCELL?

SAFETCELL has been developed by Fleet Logistics Pty Ltd / Ezy2c, a leading Australian Technology company that have built, marketed and operated a successful GPS Monitoring business for the past 7 years. Whilst initially specialising in vehicle monitoring with clients that include many of Australia's largest companies with thousands of vehicles under management, Fleet Logistics Pty Ltd / Ezy2c, have now adapted this best of breed technology to monitor mobile phones.



# SAFETCELL APPLICATION SCREEN SHOTS

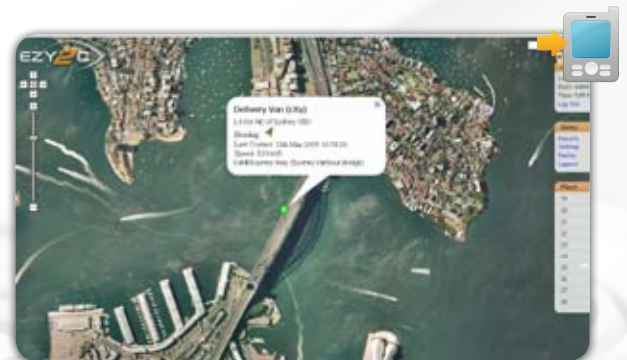


## Map View

See all of your field staff's whereabouts on a single dashboard browser view (Map, Satellite and Hybrid View)

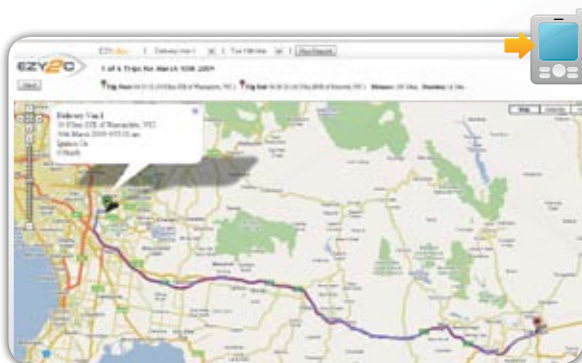
## Satellite View

Pinpoint a specific employee's whereabouts for safety purposes in a "man down" scenario. Or find the closest worker to the "next job" quickly and easily



## Movement Reporting

Zoom in and out of Google Earth street map showing Employee's routes and stops taken. Improve productivity by optimal route planning



## All Positions and Speed Report (Current and Historic Data)

Reports outlining the locations and duration of where an employee has been over a specified period as well as details of the speed an employee has been travelling.

Local Time	Speed	Location
2019-03-19 07:42:44	111.7	16 Salvo Way of Bannockburn, VIC
2019-03-19 07:43:44	102.3	16 Salvo Way of Bannockburn, VIC
2019-03-19 07:44:44	109.9	22 Salvo Way of Bannockburn, VIC
2019-03-19 07:45:44	111.3	16 Salvo Way of Bannockburn, VIC
2019-03-19 07:46:44	102.3	16 Salvo Way of Bannockburn, VIC
2019-03-19 07:47:44	109.9	22 Salvo Way of Bannockburn, VIC
2019-03-19 07:48:44	111.3	16 Salvo Way of Bannockburn, VIC
2019-03-19 07:49:44	102.3	16 Salvo Way of Bannockburn, VIC
2019-03-19 07:50:44	109.9	22 Salvo Way of Bannockburn, VIC
2019-03-19 07:51:44	111.3	16 Salvo Way of Bannockburn, VIC
2019-03-19 07:52:44	102.3	16 Salvo Way of Bannockburn, VIC
2019-03-19 07:53:44	109.9	22 Salvo Way of Bannockburn, VIC
2019-03-19 07:54:44	111.3	16 Salvo Way of Bannockburn, VIC
2019-03-19 07:55:44	102.3	16 Salvo Way of Bannockburn, VIC
2019-03-19 07:56:44	109.9	22 Salvo Way of Bannockburn, VIC
2019-03-19 07:57:44	111.3	16 Salvo Way of Bannockburn, VIC
2019-03-19 07:58:44	102.3	16 Salvo Way of Bannockburn, VIC
2019-03-19 07:59:44	109.9	22 Salvo Way of Bannockburn, VIC
2019-03-19 08:00:44	111.3	16 Salvo Way of Bannockburn, VIC
2019-03-19 08:01:44	102.3	16 Salvo Way of Bannockburn, VIC
2019-03-19 08:02:44	109.9	22 Salvo Way of Bannockburn, VIC
2019-03-19 08:03:44	111.3	16 Salvo Way of Bannockburn, VIC
2019-03-19 08:04:44	102.3	16 Salvo Way of Bannockburn, VIC
2019-03-19 08:05:44	109.9	22 Salvo Way of Bannockburn, VIC
2019-03-19 08:06:44	111.3	16 Salvo Way of Bannockburn, VIC
2019-03-19 08:07:44	102.3	16 Salvo Way of Bannockburn, VIC
2019-03-19 08:08:44	109.9	22 Salvo Way of Bannockburn, VIC
2019-03-19 08:09:44	111.3	16 Salvo Way of Bannockburn, VIC
2019-03-19 08:10:44	102.3	16 Salvo Way of Bannockburn, VIC
2019-03-19 08:11:44	109.9	22 Salvo Way of Bannockburn, VIC
2019-03-19 08:12:44	111.3	16 Salvo Way of Bannockburn, VIC
2019-03-19 08:13:44	102.3	16 Salvo Way of Bannockburn, VIC
2019-03-19 08:14:44	109.9	22 Salvo Way of Bannockburn, VIC
2019-03-19 08:15:44	111.3	16 Salvo Way of Bannockburn, VIC
2019-03-19 08:16:44	102.3	16 Salvo Way of Bannockburn, VIC
2019-03-19 08:17:44	109.9	22 Salvo Way of Bannockburn, VIC
2019-03-19 08:18:44	111.3	16 Salvo Way of Bannockburn, VIC
2019-03-19 08:19:44	102.3	16 Salvo Way of Bannockburn, VIC
2019-03-19 08:20:44	109.9	22 Salvo Way of Bannockburn, VIC
2019-03-19 08:21:44	111.3	16 Salvo Way of Bannockburn, VIC
2019-03-19 08:22:44	102.3	16 Salvo Way of Bannockburn, VIC
2019-03-19 08:23:44	109.9	22 Salvo Way of Bannockburn, VIC
2019-03-19 08:24:44	111.3	16 Salvo Way of Bannockburn, VIC
2019-03-19 08:25:44	102.3	16 Salvo Way of Bannockburn, VIC
2019-03-19 08:26:44	109.9	22 Salvo Way of Bannockburn, VIC
2019-03-19 08:27:44	111.3	16 Salvo Way of Bannockburn, VIC
2019-03-19 08:28:44	102.3	16 Salvo Way of Bannockburn, VIC
2019-03-19 08:29:44	109.9	22 Salvo Way of Bannockburn, VIC
2019-03-19 08:30:44	111.3	16 Salvo Way of Bannockburn, VIC
2019-03-19 08:31:44	102.3	16 Salvo Way of Bannockburn, VIC
2019-03-19 08:32:44	109.9	22 Salvo Way of Bannockburn, VIC
2019-03-19 08:33:44	111.3	16 Salvo Way of Bannockburn, VIC
2019-03-19 08:34:44	102.3	16 Salvo Way of Bannockburn, VIC
2019-03-19 08:35:44	109.9	22 Salvo Way of Bannockburn, VIC
2019-03-19 08:36:44	111.3	16 Salvo Way of Bannockburn, VIC
2019-03-19 08:37:44	102.3	16 Salvo Way of Bannockburn, VIC
2019-03-19 08:38:44	109.9	22 Salvo Way of Bannockburn, VIC
2019-03-19 08:39:44	111.3	16 Salvo Way of Bannockburn, VIC
2019-03-19 08:40:44	102.3	16 Salvo Way of Bannockburn, VIC
2019-03-19 08:41:44	109.9	22 Salvo Way of Bannockburn, VIC
2019-03-19 08:42:44	111.3	16 Salvo Way of Bannockburn, VIC
2019-03-19 08:43:44	102.3	16 Salvo Way of Bannockburn, VIC
2019-03-19 08:44:44	109.9	22 Salvo Way of Bannockburn, VIC
2019-03-19 08:45:44	111.3	16 Salvo Way of Bannockburn, VIC
2019-03-19 08:46:44	102.3	16 Salvo Way of Bannockburn, VIC
2019-03-19 08:47:44	109.9	22 Salvo Way of Bannockburn, VIC
2019-03-19 08:48:44	111.3	16 Salvo Way of Bannockburn, VIC
2019-03-19 08:49:44	102.3	16 Salvo Way of Bannockburn, VIC
2019-03-19 08:50:44	109.9	22 Salvo Way of Bannockburn, VIC
2019-03-19 08:51:44	111.3	16 Salvo Way of Bannockburn, VIC
2019-03-19 08:52:44	102.3	16 Salvo Way of Bannockburn, VIC
2019-03-19 08:53:44	109.9	22 Salvo Way of Bannockburn, VIC
2019-03-19 08:54:44	111.3	16 Salvo Way of Bannockburn, VIC
2019-03-19 08:55:44	102.3	16 Salvo Way of Bannockburn, VIC
2019-03-19 08:56:44	109.9	22 Salvo Way of Bannockburn, VIC
2019-03-19 08:57:44	111.3	16 Salvo Way of Bannockburn, VIC
2019-03-19 08:58:44	102.3	16 Salvo Way of Bannockburn, VIC
2019-03-19 08:59:44	109.9	22 Salvo Way of Bannockburn, VIC
2019-03-19 09:00:44	111.3	16 Salvo Way of Bannockburn, VIC

# SAFETCELL FEATURES & BENEFITS

Features	Benefits
View your staff's whereabouts in real time from any web browser, in; map, satellite or hybrid view	<ul style="list-style-type: none"> <li>• OH&amp;S/Duty of Care i.e. Reduce the number of Workers Compensation Claims</li> <li>• Eliminate staff down time (un-productive time)</li> <li>• Improve resource management with the allocation of jobs - closest person to the next job</li> <li>• Eliminate the employees need for log books for kilometer reimbursement or taxation reimbursement</li> </ul>
Clock on/clock off function	<ul style="list-style-type: none"> <li>• Accurate payroll calculation through confirmation of hours worked</li> <li>• Eliminate the need for employees to visit the office for time sheet purposes, therefore increasing productivity</li> <li>• Accurate job costing / billing - while staff are on client sites</li> <li>• Proof of working hours at client site</li> <li>• Proof of Delivery location and time</li> <li>• Web portal will not report during personal time (when clocked off) unless it is specifically requested through the web portal. In this situation, an Email notification will be sent to the employee and will appear on their PC</li> </ul>
Speed and route reporting	<ul style="list-style-type: none"> <li>• Calculate the time taken to perform allocated tasks</li> <li>• Gauge travel time to client sites</li> <li>• View unauthorised stops</li> <li>• Eliminate excessive speeding and therefore reduce possibility of accidents</li> <li>• Analyse routes traveled on a regular basis, to assist with route planning which will increase productivity and lower fuel costs</li> <li>• Ensure superior customer service through monitoring time spent at client premises</li> </ul>
SOS function*	<ul style="list-style-type: none"> <li>• Man down reporting, safety feature for remote workers – sends an alert with the specific location of where the person is at, at that exact moment</li> <li>• Assess history of staff movements over time</li> </ul>
Utilise Emails instead of SMS's or phone calls	<ul style="list-style-type: none"> <li>• Reduce communication costs by employing Email correspondence rather than SMS or voice calls. Email communication from your BlackBerry is effectively free<sup>^</sup>. This will also provide you with a permanent record of all correspondence for verification if needed</li> <li>• Eliminate calls by utilizing the web portal to view a staff member's location (1 in 3 phone calls are to find out where someone is)</li> </ul>

# SAFETCELL FEATURES & BENEFITS

Features	Benefits
Report on locations visited per day/week/month	<ul style="list-style-type: none"><li>• Benchmark employees on how many client visits or deliveries are performed in the designated period. This report will also include; travel time and time spent on site</li><li>• Provide proof for Service Level Agreements regarding the number of times staff have visited a specific location over a set period of time</li><li>• Mark specific locations utilising the BlackBerry device which you can label instantly, or at a later time. E.g. you are at a prospects office- you can set and flag the location so that it appears on the web portal for future reference and reporting</li></ul>
Locate misplaced/stolen devices	<ul style="list-style-type: none"><li>• Locate lost BlackBerry devices quickly, reduce the cost of replacement devices and ensure corporate data does not end up “in the wrong hands”</li><li>• Security/safety measure for executive level staff</li></ul>
Email or SMS reporting	<ul style="list-style-type: none"><li>• Receive reports if software is deactivated</li><li>• The handset and web portal will receive an Email notification if the battery is running low or has to shut down due to insufficient battery power (15%)</li><li>• Run reports on a number of various parameters such as; time when staff member arrives at work or at client site, when a staff member leaves a specific area, speeding alerts etc</li></ul>
Smart movement based reporting interval	<ul style="list-style-type: none"><li>• The device knows when someone is moving or is stationary and reports based on movement intervals</li><li>• Conserve battery power on your BlackBerry device with the web portal reporting at set intervals</li><li>• Have the ability to instantly poll your devices to see where they are at that exact point in time</li></ul>

^ Dependant upon BlackBerry plan  
\* SOS function to be release by Q2 2009

# SAFETCELL SUMMARY

## SAFETCELL Commercial Applications:

- Field Workers
- Field Consultants
- Drivers
- Sales Staff
- Remote workers
- Senior Executives - when travelling overseas

## SAFETCELL Family Security Applications:

- Family members
- Teenagers
- Families/teenagers when they are travelling overseas
- Disabled or elderly persons

## Tech Specs:

- SAFETCELL will utilise the full capability of your BlackBerry handheld device's GPS module. Note: some devices provide more accuracy than others.
- SAFETCELL is reliant on the US Government controlled GPS system and therefore may be subject to issues which are beyond the control of Ezy2c.
- SAFETCELL will work while you or your employees are travelling overseas, so long as they have network coverage at their destination, you will be able to view their location.

## Pricing:

**\$299 per annum, per device (Approx 50 cents per day).  
Volume Discounts Apply.**

- Free 7 day trial
- Quick and easy to install
- No software or hardware charges – 100% subscription based
- Auto “stop track” option outside working hours
- Proven Return on Investment (ROI) within weeks
- Easy to navigate
- Increase staff productivity and introduce accountability

## Contact SAFETCELL today on:

**Sales:** 0458 733 922 **Operations:** 02 66 42 1100

Suite 2402, Westfield Tower 1, 520 Oxford St  
Bondi Junction NSW 2022

**Email:** safetcell @ezy2c.com **Web:** www.ezy2c.com.au/safetcell

SAFETCELL

